



# Water Tank Monitoring

Remotely monitor water levels in your tanks. Automatically turn pumps off when the tanks are full.

Check the condition of your water pump, solar panels and battery.

Optionally measure total water used, flow rates, water temperature and salinity.

Receive immediate reports when levels drop due to damage or theft.



Connect pressure, ultrasonic or radar level sensors to the 4-20mA or MODBUS inputs.

Remotely control pumps and valves with outputs, Modbus or CAN-Bus connection.

Power with solar with inbuilt backup battery and regulator or run of AA batteries.

Calibrate odd shaped tanks with a simple script.

Integrated GPS for location.

# Why Senquip?



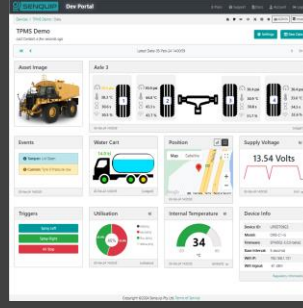
## Connect to Anything

Interface to any engine, controller, or sensor, no matter the brand, physical interface, or protocol.



## Process Everything

Edge process measured data, create custom alerts, and control connected systems.



## Send Anywhere

Send data to the Senquip Portal or any other server. No ongoing costs, no lock in contracts.



## Trusted Everywhere

Designed for use in harsh industrial, mining, and agricultural environments.



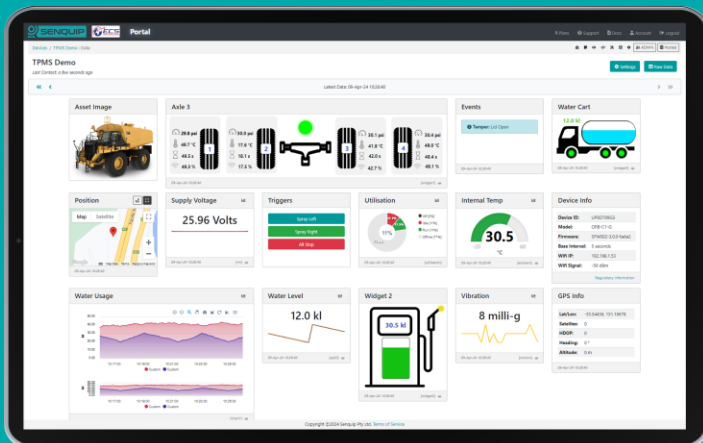
## Senquip ORB

For extreme environments where IP ratings are essential and external antennas may be damaged. Typically mounted on poles, walls, and externally on machines



## Senquip QUAD

For harsh environments where external antennas are a benefit. Typically found in electrical cabinets, in operator cabs, and mounted externally on machines.



## Senquip Portal

The Senquip Portal is a secure cloud solution that offers a no-cost or low-cost device management and data hosting + analytics solution for Senquip devices.



TELEMETRY FOR HARSH ENVIRONMENTS